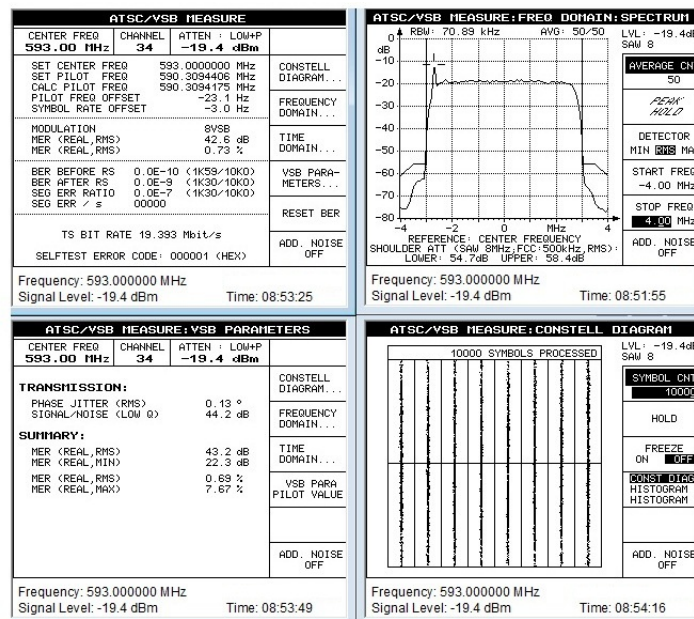




- Full color touchscreen display
- Internal band pass filter (mask)
- Internal RF isolator (all UHF, high band VHF only)
- 2 stage amplification
- Class A/AB operation
- Linear and non-linear pre-correction with Technalogix TM600-8VSB modulator
- Automatic adaptive pre-correction available with TM700-8VSB modulator
- Designed for adjacent operation
- Ultra efficient switching power supply
- 2 Year Warranty

RISTICSRF CHARACTERISTICS

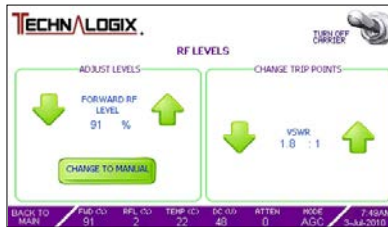
Frequency Range	VHF 50 – 230 MHz, UHF 470 - 860 MHz
Input Power	0 dBm into power amplifier from modulator
Nominal Output Power (8VSB)	VHF (25W, 100W, 250W, 500W, 1kW, 2kW) UHF (30W, 40W, 50W, 100W, 250W, 500W, 700W, 1kW, 2kW)
Power Level	Adjustable 10 – 100%
Input Impedance	50 Ω into amplifier, BNC female
Output Impedance	50 Ω, N or 7-16 DIN female (dependent on power level)
Modulation	8VSB, QAM, DVBT/H, etc (output power will change between standards)
MER	>36 dB typical
BER	>38 dB typical
SN	>40 dB typical
Phase Jitter	>104 dB
Shoulders	>50 dB typical, ATSC mode compliant to ATSC A53/B



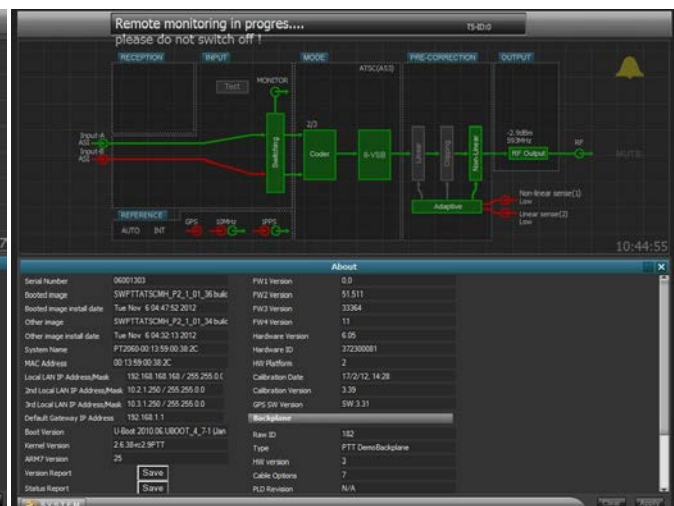
Typical Performance Specifications (TM700-8VSB + TAVD/TAUD Amplifier)

INTERFACE

DB25 Remote Port	<p>Control: RF carrier on/off, RF power up/down, reset</p> <p>Monitor: Forward/reflected RF level, control PCB Vcc</p> <p>Flags: Amplifier overdrive, VSWR (adjustable trip point), high temperature</p>
Ethernet	<p>Control: RF carrier on/off, RF power up/down, AGC/manual mode, change VSWR trip point, reset</p> <p>Monitor: Forward/reflected RF level, DC pallet voltage, RF input level, temperature, VSWR trip point, model/serial number</p> <p>Flags: Carrier on/off, amplifier overdrive, DC pallet voltage, VSWR, RF input level, temperature, AGC/manual status</p>
SNMP current,	<p>Control: RF carrier on/off, RF power up/down, AGC/manual mode, change VSWR trip point, reset</p> <p>Monitor: Forward/reflected RF level, DC pallet voltage, RF input level, temperature, pallet attenuation, run time, RF fault, model/serial number</p> <p>Flags: Amplifier overdrive, VSWR, temperature, SNMP error</p>



Screenshots off Touchscreen Interface



Screenshots off Modulator Interface

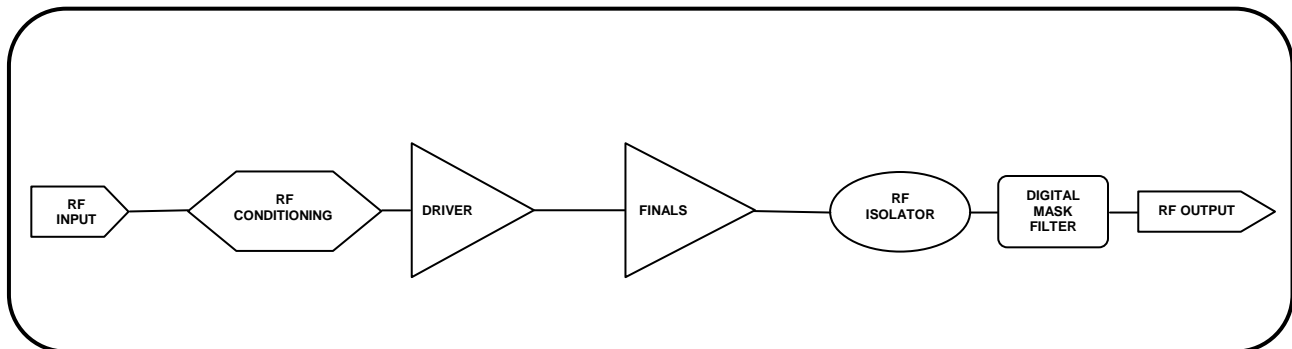
PHYSICAL FEATURES

Minimal Rack Space	VHF PA (25W in 3U; 100W/250W/500W in 5U; 1kW in 6U+3U PSU; 2kW in 12U+5U PSU) x 25"D x 19"W * UHF PA (30W/40W/50W in 3U; 100W/250W/500W/700W in 5U; 1kW in 6U+3U PSU; 2kW in 12U+5U PSU) x 25"D x 19"W *
Lightweight Enclosures	* Technalogix digital modulators add an additional 2U in height to any PA Aluminum
Operating Temperature	0 to +45° C
Humidity	90%, non-condensing

ELECTRICAL CHARACTERISTICS

Flexible AC Input	VHF PA (25W 90-132Vac or 180-264Vac (switch); 100W 90-132Vac or 180-264Vac (jumper); 250W/500W/1kW/2kW 180-264Vac) UHF PA (30W/40W/50W 90-132Vac or 180-264Vac (switch); 100W 90-132Vac or 180-264Vac (jumper); 250W/500W/1kW/2kW 180-264Vac) Other AC supply voltages and phases available on request
--------------------------	--

TYPICAL BLOCK DIAGRAM



** Due to continuous product improvements, Technalogix reserves the right to change specifications without notice. **